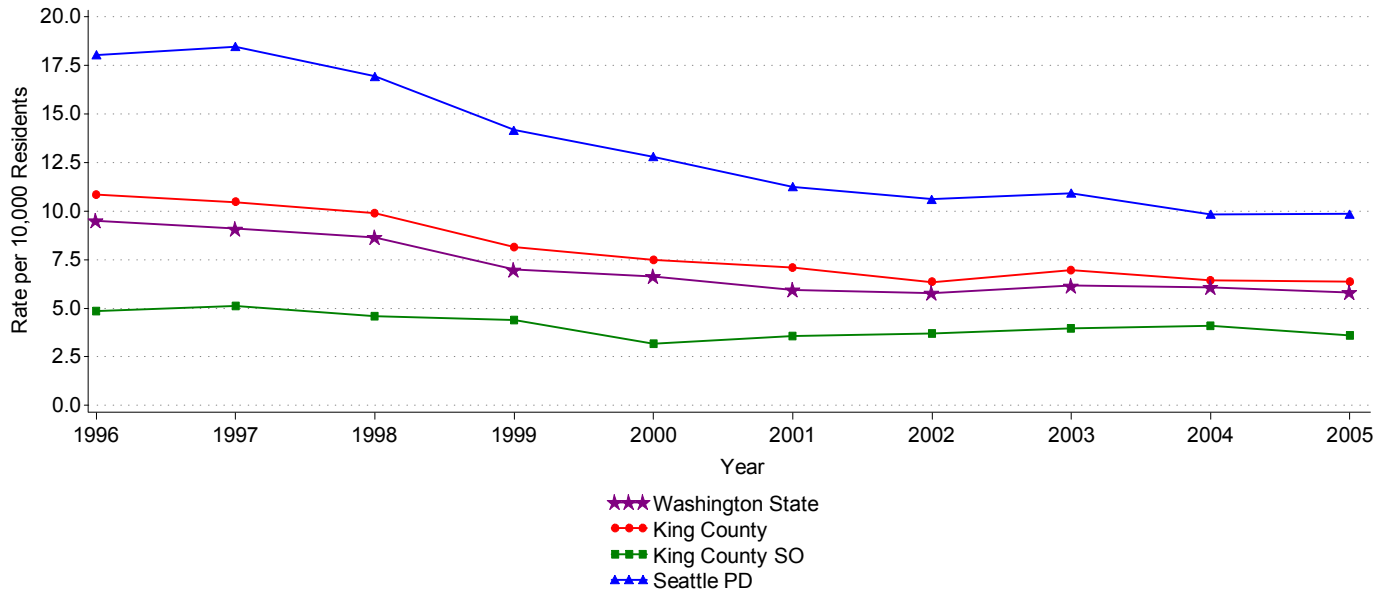


Crime Trends: Violent Crimes w/ Firearm, 1996 - 2005

Graph: Crime Rate(s) per 10,000 Residents
Tables: Crime Rate(s) and Crime Count(s)



Violent Crimes w/ Firearm	Crime Rate per 10,000 Residents									
	1996	1997	1998	1999	2000	2001	2002	2003	2004	2005
Washington State	9.4	9.0	8.6	6.9	6.6	5.9	5.7	6.1	6.0	5.8
King County	10.8	10.4	9.8	8.1	7.4	7.0	6.3	6.9	6.4	6.3
King County SO	4.8	5.1	4.5	4.3	3.1	3.5	3.7	3.9	4.0	3.6
Seattle PD	18.0	18.4	16.9	14.1	12.7	11.2	10.5	10.9	9.8	9.8

Violent Crimes w/ Firearm	Crime Count									
	1996	1997	1998	1999	2000	2001	2002	2003	2004	2005
Washington State	5,050	5,082	4,899	4,009	3,844	3,548	3,454	3,714	3,709	3,631
King County	1,780	1,735	1,657	1,378	1,272	1,258	1,136	1,248	1,160	1,162
King County SO	210	210	178	157	114	126	131	140	146	132
Seattle PD	963	990	913	765	691	638	605	624	563	564

State/County/Juris.	% of Area Population Represented by Reporting Agencies									
	1996	1997	1998	1999	2000	2001	2002	2003	2004	2005
Washington State	89%	92%	92%	92%	92%	93%	92%	92%	92%	93%
King County	93%	93%	93%	92%	92%	95%	95%	95%	95%	95%
King County SO	100%	100%	100%	100%	100%	100%	100%	100%	100%	100%
Seattle PD	100%	100%	100%	100%	100%	100%	100%	100%	100%	100%

Note: UCR crime categories that can be categorized as involving firearms or not include: Murder, Aggravated Assault, and Robbery. Forcible Rape is not included in the calculation of "Violent Crimes w/ Firearm."

Note: 'NP' - If no population data are available in a particular year for a particular agency, crime rates are not calculated or presented for that year.

Note: 'PY' - UCR data are submitted voluntarily to WASPC by law enforcement agencies across Washington State. Sometimes, infrequently, agencies are not able to report a full twelve months of crime data. When an agency submits less than twelve months of crime data, they are included in the crime counts, but crime rates are not calculated. Partial year reporting is further indicated by italics in the Crime Count cell.

Note: 'NR' - UCR data are submitted voluntarily to WASPC by law enforcement agencies across Washington State. Sometimes, infrequently, agencies are not able to report data at all. When an agency does not submit any crime data, neither counts nor crime rates can be calculated or presented.

Report Source: www.WACrimeStats.net - developed and hosted by Looking Glass Analytics (www.lgan.com)

Data Source: Washington Association of Sheriffs and Police Chiefs Uniform Crime Reporting (UCR) Department (www.waspc.org)